

PALMETTO GROVE

BEING A PORTION OF THE SOUTHWEST ONE-QUARTER OF SECTION 28,
TOWNSHIP 37 SOUTH, RANGE 41 EAST,
MARTIN COUNTY, FLORIDA

CLERK'S RECORDING CERTIFICATE

I, MARSHA STILLER, CLERK OF THE CIRCUIT COURT OF MARTIN COUNTY, FLORIDA, HEREBY CERTIFY THAT THIS PLAT WAS FILED FOR RECORD IN PLAT BOOK 12, PAGE 69, MARTIN COUNTY, FLORIDA, PUBLIC RECORDS, THIS DAY OF _____, 1990.

MARSHA STILLER, CLERK
CIRCUIT COURT
MARTIN COUNTY, FLORIDA.

BY: _____
DEPUTY CLERK
FILE NO. _____

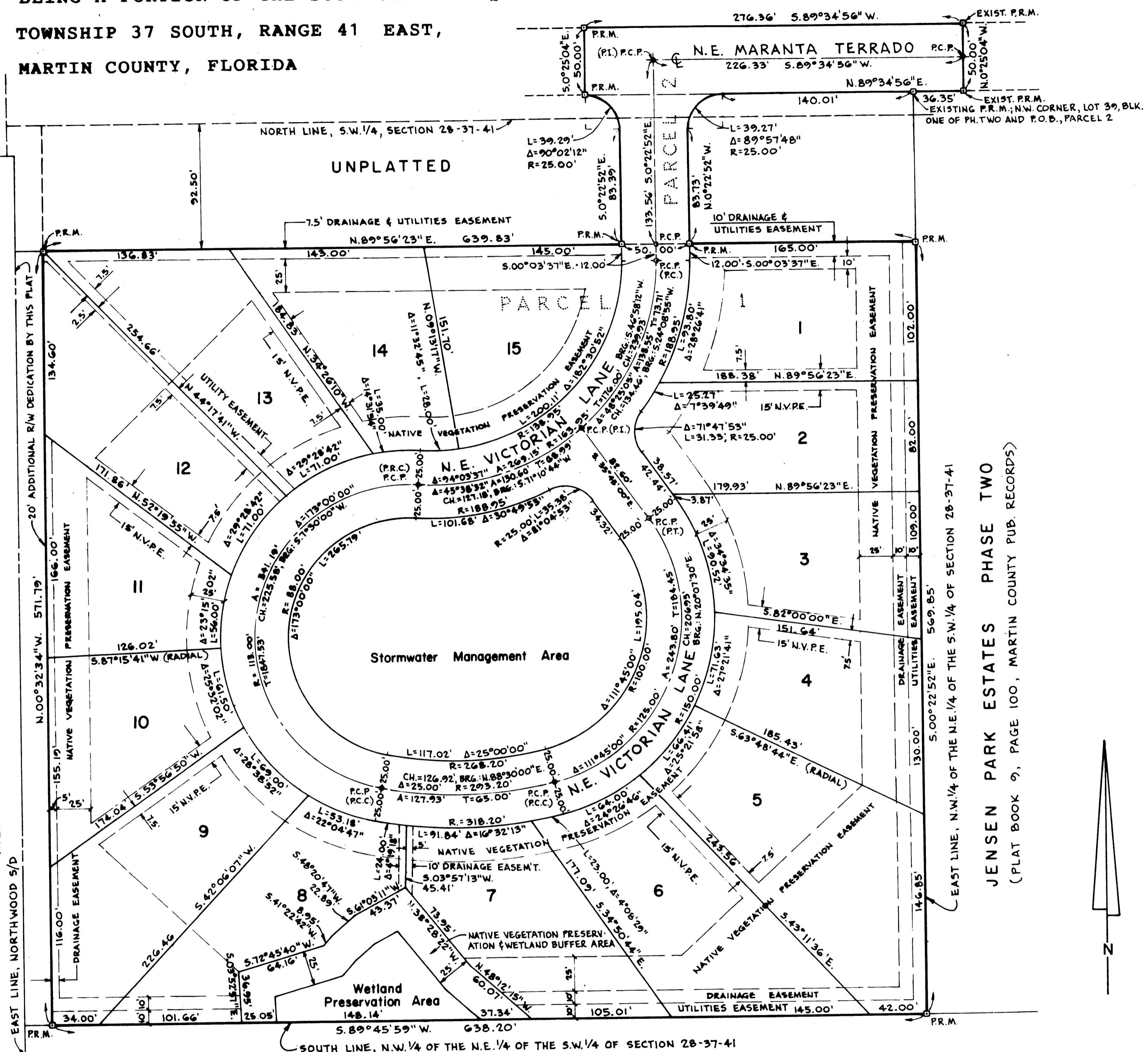
(CIRCUIT COURT SEAL)

DATE: SEPTEMBER 1990

NORTHWOOD S/D
(PLAT BOOK 1, PAGE 55, MARTIN COUNTY, PUB. REC.)

N.E. CARDINAL AVENUE (30' R/W FROM PLAT OF NORTHWOOD)

JENSEN PARK ESTATES PHASE TWO
(PLAT BOOK 9, PAGE 100, MARTIN COUNTY PUB. RECORDS)



NOTES:

IN ACCORDANCE WITH THE "PALMETTO GROVE DECLARATION OF COVENANTS AND RESTRICTIONS" LOT CLEARING WILL BE LIMITED TO A MAXIMUM OF 5000 SQ. FT.

BEARINGS SHOWN HEREON ARE RELATED TO A VALUE OF N.00° 22' 52" W. ON THE WEST LINE OF JENSEN PARK ESTATES PHASE TWO.

DRIVEWAY ACCESS THROUGH NATIVE VEGETATION PRESERVATION EASEMENTS SHALL BE IN ACCORDANCE WITH THE ENVIRONMENTAL RESOURCE AND PRESERVE AREA MANAGEMENT PLAN APPROVED BY MARTIN COUNTY.

THERE SHALL BE NO ACCESS TO LOTS FROM N. E. CARDINAL AVENUE WITHOUT MARTIN COUNTY APPROVAL.

THERE SHALL BE NO LOT SPLITS EXCEPT TO CREATE A LARGER LOT.

THERE SHALL BE NO BUILDING OR ANY OTHER KIND OF CONSTRUCTION OR TREES OR SHRUBS PLACED ON DRAINAGE EASEMENTS NOR ON UTILITY EASEMENTS.

LEGEND

P.R.M. = PERMANENT REFERENCE MONUMENT (SHOWN AS —))
P.C.P. = PERMANENT CONTROL POINT (SHOWN AS —))
N.N.P.E. = NATIVE VEGETATION PRESERVATION EASEMENT

THIS INSTRUMENT PREPARED BY:
Arthur Speedy for:
C. Colvert Montgomery & Associates, Inc.
P.O. Box 92, 256 Osceola Avenue
Stuart, Florida 34995